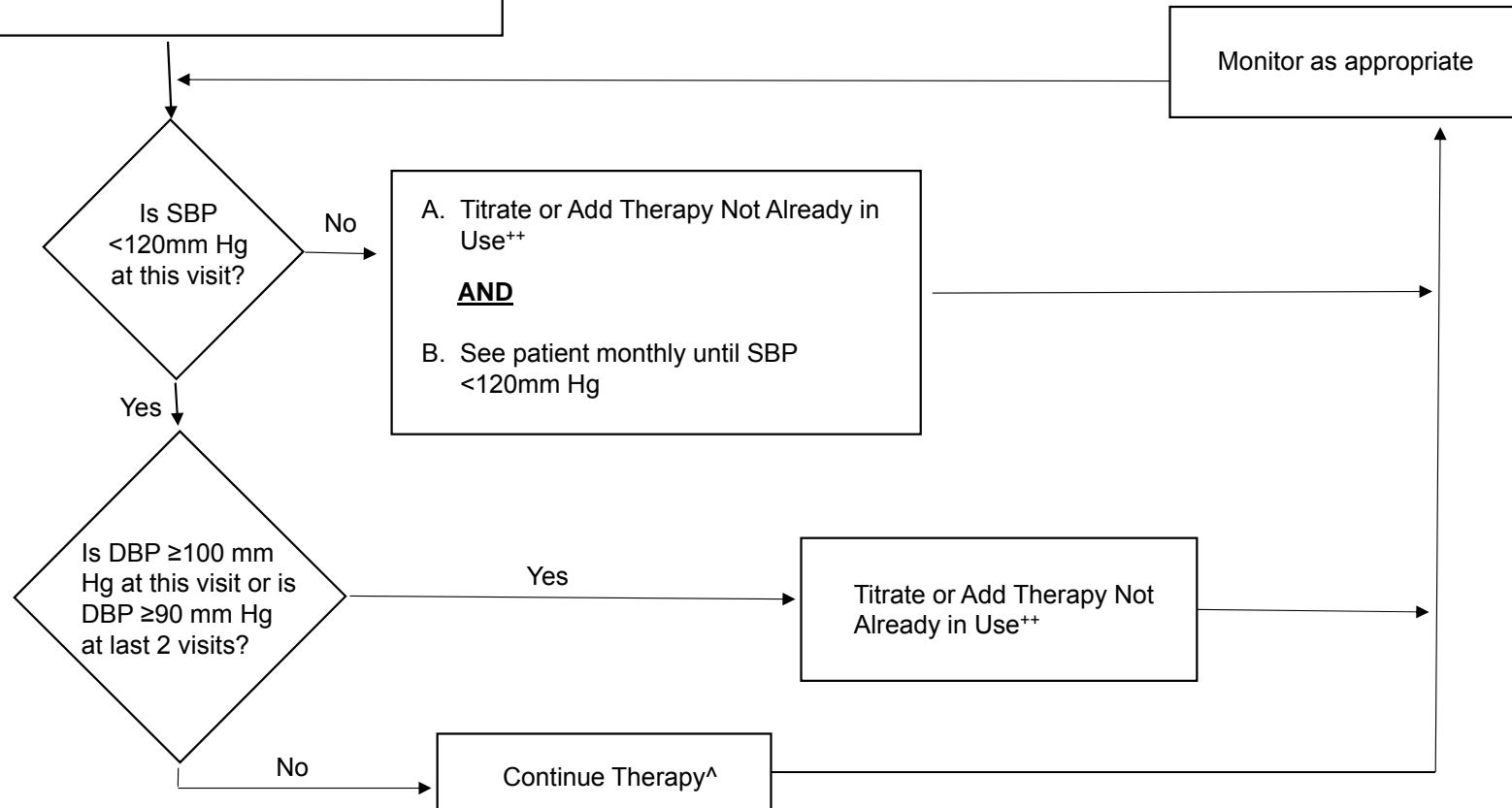


**Start Here:** Begin with 2 or 3 drug therapy\* using a combination of a thiazide-type diuretic\*\*, and/or an ACEI or ARB (but not both) and/or a CCB. Include a  $\beta$ -blocker or other agents as appropriate for compelling indication

## Treatment Algorithm for the SPRINT Intensive Group Systolic Blood Pressure (SBP) Goal < 120 mm Hg



\*May begin with a single agent for patients  $\geq 75$  years old with SBP  $\leq 140$  on 0-1 medication. A second medication should be added after 1 month if patient is asymptomatic and SBP  $\geq 130$ .

\*\*May use loop diuretic for participants with advanced Chronic Kidney Disease.

\*\* Consider consulting a hypertension expert before adding a fifth anti-hypertensive medication. Modify therapy until a clinical decision is made that therapy should not be increased further.

^ Unless side effects warrant change in therapy.